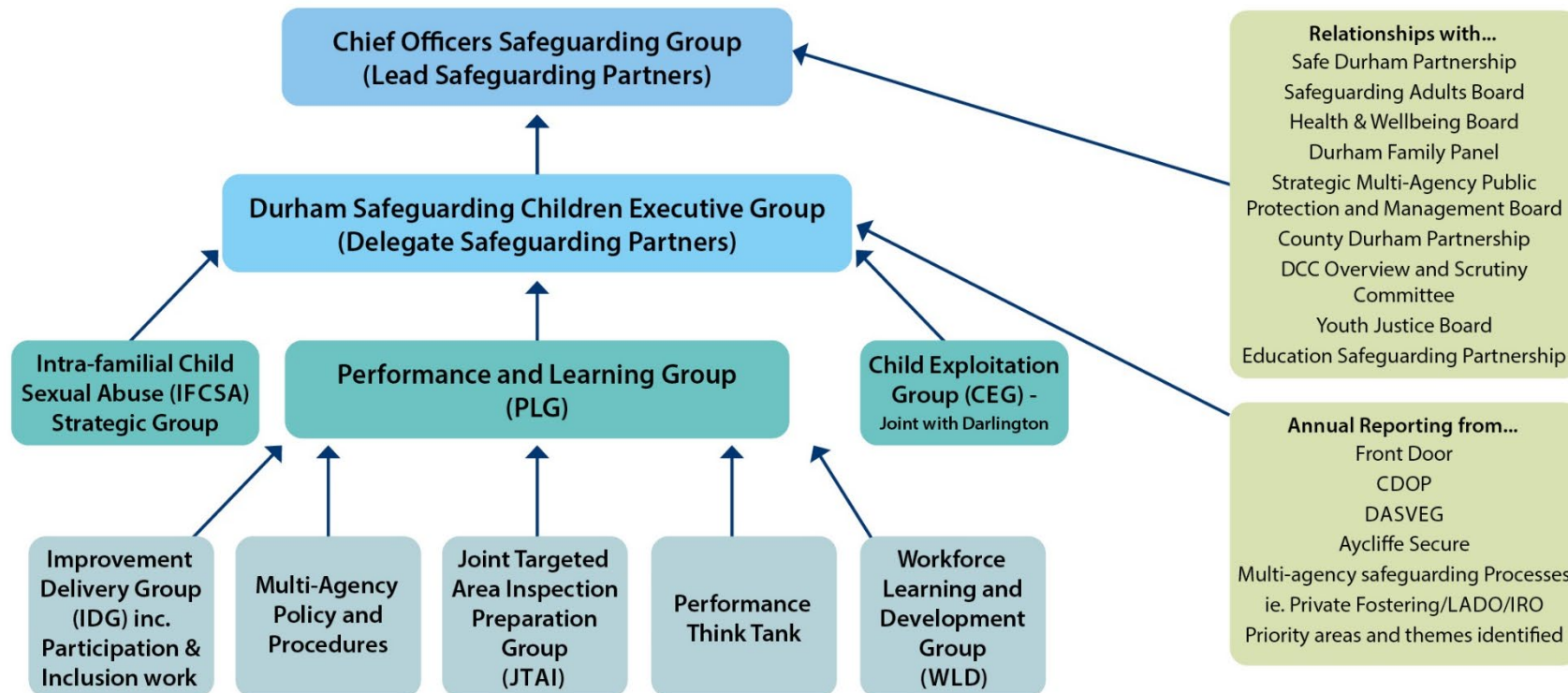


Durham Safeguarding Children Partnership Structure



The DSCP Governance Structure has four layers with the Lead Safeguarding Partners/Chief Officers Group positioned with the highest level of Oversight, setting the Strategic direction, vision and culture of the Partnership. The Delegate Partners sit within the Executive Group ensuring the delivery of the Strategic priorities. The Performance and Learning Group (PLG) is the management group which drives the work of the partnership through five dedicated sub groups. The Child Exploitation Group is the only themed sub-group which reports directly into the Executive Group whilst working alongside the PLG.

Reporting into
 Relationship with

Text version of the structure diagram

At the top of the structure is the Chief Officers Safeguarding Group, these are the Lead Safeguarding Partners.

The Child Officers Safeguarding Group has close relationships with the Safe Durham Partnership, Safeguarding Adults Board, Health & Wellbeing Board, The Durham Family, Strategic Multi-Agency Public Protection and Management Board, County Durham Partnership, DCC Overview and Scrutiny Committee, Youth Justice Board Education Safeguarding Partnership.

Feeding into this is the Durham Safeguarding Children Executive Group, these are the Delegate Safeguarding Partners

The Durham Safeguarding Children Executive Group has Annual Reporting from Front Door, CDOP, DASVEG, Aycliffe Secure, Multi-agency safeguarding Processes ie. Private Fostering/LADO/IRO, Priority areas and themes identified.

Feeding into this are two main subgroups the Performance and Learning Group (PLG) and the Child Exploitation Group (CEG) which is joint with Darlington

Feeding into the Performance and Learning Group are 5 sub-groups:

- Improvement Delivery Group (IDG) inc. Participation & Inclusion work
- Multi-Agency Policy and Procedures
- Joint Targeted Area Inspection Preparation Group (JTAI)
- Performance Think Tank
- Workforce Learning and Development Group (WLD)

The D S C P Governance Structure has four layers with the Lead Safeguarding Partners/Chief Officers Group positioned with the highest level of oversight, setting the Strategic direction, vision and culture of the Partnership. The Delegate Partners sit within the Executive Group ensuring the delivery of the Strategic priorities. Intra-familial Child Sexual Abuse (IFCSA) Strategic Group, The Performance and Learning Group (PLG) is the management group which drives the work of the partnership through five dedicated subgroups. The Child Exploitation Group is the only themed sub-group which reports directly into the Executive Group whilst working alongside the PLG.